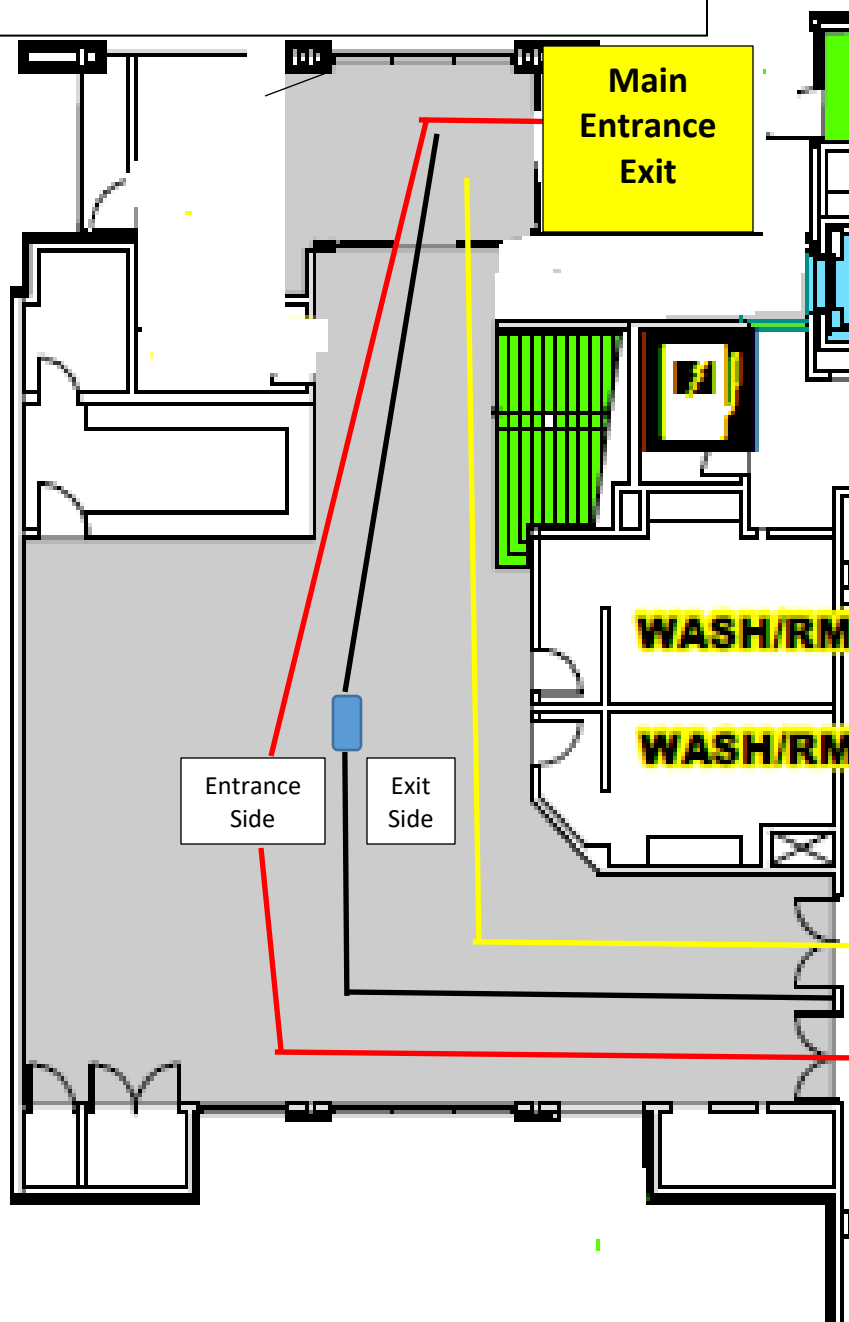


Nicholas Sheran Ice Centre



Nicholas Sheran Ice Arena - User Guidelines

Red Line – Entrance Yellow Line – Exit

1. Enter through the main arena entrance. When entering the lobby area, stay to the right side.
2. Users can prepare for their booking in the space provided on the right side of the lobby (towards the pool side)
3. Enter the ice surface through the double doors on the ice level.
4. If during your session users need to use the washroom, they can exit the ice surface through the man gate next to the player's bench. Return to the ice using the same entrance.
5. When exiting the ice surface at the conclusion of your booking, use the large exit gate (the same as you entered the ice surface).
6. Use the right hand door. Use this area to remove skates etc.
7. Exit the building using the same door as the entrance

